



Canaveral iQ™ for Wyse NTe and XPe Clients

A guide for the Wyse Windows NT Embedded 4.0 and the Wyse Windows XP Embedded terminals

Release 1.5

Installation Guide

Abstract

This document addresses an administrator's and the user's interactions with Canaveral iQ, and it covers installing the Canaveral WBT add-on to the Wyse for Windows NT Embedded 4.0 and the Wyse for Windows XP Embedded terminals.

© 2002 New Moon Systems Inc. All rights reserved.

The information contained in this document represents the current view of New Moon Systems Inc. on the issues discussed as of the date of publication. Because New Moon Systems Inc. must respond to changing market conditions, it should not be interpreted to be a commitment on the part of New Moon Systems, and New Moon cannot guarantee the accuracy of any information presented after the date of publication.

This white paper is for informational purposes only. NEW MOON MAKES NO WARRANTIES, EXPRESS OR IMPLIED, IN THIS DOCUMENT.

Complying with all applicable copyright laws is the responsibility of the user. Without limiting the rights under copyright, no part of this document may be reproduced, stored in or introduced into a retrieval system, or transmitted in any form or by any means (electronic, mechanical, photocopying, recording or otherwise) or for any purpose, without the express written permission of New Moon Systems Inc.

Canaveral iQ, Canaveral License Policy Manager, Canaveral Management Console are trademarks or registered trademarks of New Moon Systems Inc. Microsoft and Windows are registered trademarks of Microsoft Corporation. All other company, product and brand names are trademarks of their respective owners.

*New Moon Systems • Two North Second Street Suite 1000 •
San Jose, CA 95113-1319 • USA*

Contents

Contents.....	1
Getting Started.....	2
<i>Requirements</i>	<i>2</i>
<i>Installation.....</i>	<i>2</i>
<i>Disable the write filter.....</i>	<i>2</i>
<i>Install Canaveral on Windows Embedded Terminal</i>	<i>2</i>
If you are using a Windows XP Embedded System	3
If you are using a Windows NT Embedded 4.0 terminal.....	3
For either terminal type	5
Known problems.....	6
<i>Write Filter Cache.....</i>	<i>6</i>
<i>Problems loading the Canaveral Client software.....</i>	<i>6</i>
New Moon Systems and Canaveral iQ.....	7
<i>About New Moon Systems.....</i>	<i>7</i>
<i>About New Moon Canaveral iQ</i>	<i>7</i>
<i>Other sources of information.....</i>	<i>7</i>

Getting Started

This document explains the minimum requirements for Wyse Windows NT Embedded 4.0 and Wyse Windows XP Embedded terminals to operate as clients for Canaveral iQ. It also explains how to install the Canaveral iQ software.

Requirements

The minimum requirements for flash and RAM for the Wyse Windows NT Embedded 4.0 terminal are 96-MB flash and 96-MB RAM. As of the product release date, you can have any of the following terminals configured to meet this requirement:: Winterm 8235LE, 8360SE, 8440XL, and 8630LE. In the future, look for other Wyse NT Embedded 4.0 terminals that meet the minimum requirements for flash and RAM.

The minimum requirements for flash and RAM for the Wyse Windows XP Embedded terminal are 192-MB flash and 256-MB RAM. As of the product release date, you can have any of the following terminals configured to meet this requirement: Winterm 9440XL or 4235LE. In the future, look for other Wyse XP Embedded terminals that meet the minimum requirements for flash and RAM.

Installation

The installation of the Canaveral iQ client is slightly different for a Windows XP Embedded terminal from that for a Windows NT Embedded 4.0. For either platform, you should disable the write filter.

Disable the write filter

Disable the write filter for the duration of the installation and then enable it again, disable it as follows:

1. Log on to the Wyse terminal as an Administrator.
2. Proceed to disable the terminal's write filter.
3. Click Start > Settings > Control Panel, and double-click on Devices. Look for the **wfilter** entry, highlight it, click startup, and change the startup parameter from **Boot** to **Disabled**. Next, click **OK** and then click **Close**.
4. Restart the terminal.

Install Canaveral on Windows Embedded Terminal

If you are working with a Windows embedded terminal, follow this procedure.

5. Log on to the terminal as an administrator.

You will need Administrator privileges for the installation, but you can use normal user-level privileges for general operations.

If you are using a Windows XP Embedded System

6. Go to the Canaveral Launch Pad and from the home page, click **Download Client**, click **Download Now**, and click **Open**.
7. Follow the instructions in the dialog boxes.
8. Proceed to step 15.

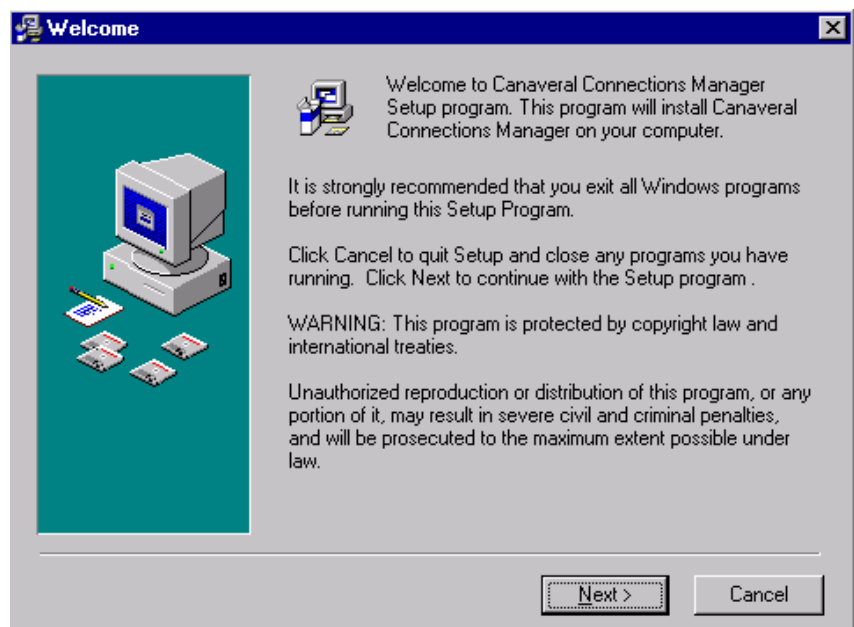
If you are using a Windows NT Embedded 4.0 terminal

9. Locate a copy of the iQclntmgrNT.exe.

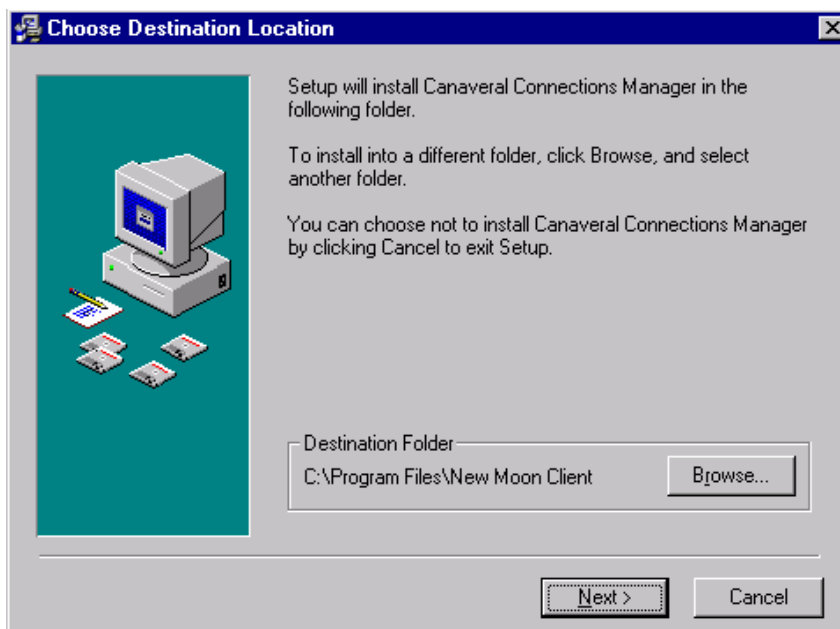
This is a separate installation program for the NT-embedded terminals. You may find this program on the Canaveral Web server at this path:

\\<web_servername>\c\$\inetpubs\wwwroot\depot\iQclntmgrNT.exe.

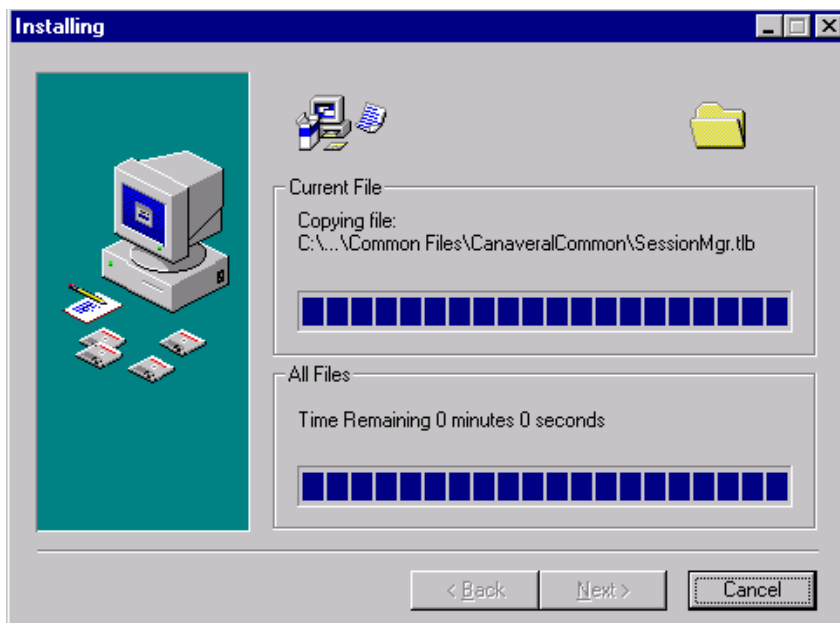
10. When you locate the iQclntmgrNT.exe file, copy it to a folder on a different server, and share the folder.
11. Run the iQclntmgrNT from a shared folder.
12. Read the Welcome dialog and click **Next**.



13. Select the installation destination folder or accept the default destination folder and click **Next**.



14. Wait for the install to complete.



For either terminal type

15. Verify that the installation completes successfully. After a successful completion, you will see a Canaveral iQ icon in your system tray (in the lower right-hand area of your desktop).
16. Log off the terminal now as you no longer require administrator privileges.
17. Log on to the terminal using the User account.
18. Access the Canaveral Launch Pad. The address will reflect your web server's name followed by the literal launchpad; for example, `http://<web_machine_name>/launchpad`
19. When you see the Logon page, log on.
20. Launch an application.

Known problems

This section looks at troubleshooting topics.

Write Filter Cache

Issue

Write filter cache on the Wyse terminal fills.

Symptom

The count for the number of blocks used increases over time.

Cause

Write filter cache on Wyse terminal fills up during use.

Resolution

Reboot the terminal once every day or two, or shut down the terminal before you leave at the end of each workday.

Problems loading the Canaveral Client software

Issue

You may have to disable the terminal's write filter for the duration of the Canaveral client install.

Symptom

The installation fails.

Cause

You may have failed to disable the write filter before installing Canaveral iQ.

Resolution

Disable the write filter for the duration of the installation and then enable it again after the installation. So before the installation, you set the wfilter startup parameter to **Disabled** and after the installation, you reset the wfilter startup parameter to **Boot**.

New Moon Systems and Canaveral iQ

About New Moon Systems

Founded in 1995, New Moon Systems combines systems software expertise with practical experience in managing and operating mission-critical data centers. New Moon is quickly becoming a leader in software platforms and systems that enable enterprises and service providers to successfully deploy and manage server-based computing.

About New Moon Canaveral iQ

New Moon Canaveral iQ makes central deployment and management of server-based Windows applications simple, intelligent, and cost effective. Serving both enterprises and service providers, Canaveral iQ increases the efficiency of IT operations and improves business performance.

Other sources of information

You can find more information, as follows:

Source	Availability
New Moon Systems Inc.	+1-408-296-8500
New Moon Technical Support Center	+1-408-248-7400
New Moon Sales Support Center	+1-888-672-4866 ¹
Main	+1-408-296-8500
Fax	+1-408-296-8600
Email to New Moon Systems	info@newmoon.com
New Moon Systems on the Web	http://www.newmoon.com

¹ Use this phone number only from within the United States.



Two North Second Street, Suite 1000
San Jose, CA 95113 USA